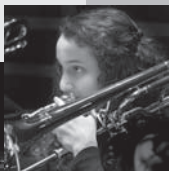
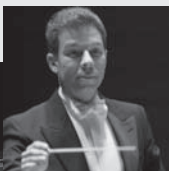


Philadelphia  
*Youth*  
ORCHESTRA

2011 • 2012  
Season Performance Schedule



## Philadelphia Youth Orchestra

Founded in 1939, Philadelphia Youth Orchestra is widely regarded as one of the nation's—and world's—top youth orchestras. Through advanced orchestra repertoire, students are challenged to perform at professional levels, to strive for advanced musicianship, and to achieve superior technical and musical application. Fourteen international concert tours since 1981 have taken PYO to many of the world's great concert halls in more than twenty countries on five continents. Its Advanced Orchestral Training Program provides a curriculum of master classes and seminars by world-renowned orchestra musicians, teachers and administrators. Former Philadelphia Youth Orchestra members hold chairs in most of the nation's top twenty professional orchestras, with 15 currently serving in The Philadelphia Orchestra.

Philadelphia Young Artists Orchestra (PYAO) provides advanced orchestra training for students who are advanced technically but may need large orchestral ensemble experience. Through standard orchestra repertoire, instruction emphasizes the development of musicianship and large-ensemble performance skills. The PYAO has performed at The Kimmel Center for the Performing Arts, The Union League of Philadelphia and other local venues. It has collaborated with various regional instrumental and choral ensembles.

Bravo Brass provides advanced musical education and performance opportunities for talented and accomplished high-school-age brass players in the Delaware Valley region.

PRYSM, Philadelphia Region Youth String Music, is a string music education program, with a comprehensive system providing string ensemble and sectional master class instruction for students of the Delaware Valley region. PRYSM believes that music excellence is an essential discipline for the development of the whole individual.

Musicopia String Orchestra is an inclusive ensemble, serving students throughout the Greater Philadelphia area. This program has a high ratio of music staff to students and is a welcoming home to students whose skill levels range widely.

Tune Up Philly's mission is to nurture children in challenging social and economic conditions through keeping them engaged in success through weekday out-of-school hours music instruction. Tune Up Philly, PYO Organization believes that music education is a powerful vehicle for children to master skills that will enable them to acquire valuable tools for cooperative learning, teamwork academic success and self-esteem.

## Artistic & Educational Leadership

### **Louis Scaglione, President & Music Director**

In September 2005, after seven years as Associate Conductor, Maestro Scaglione was appointed Music Director and Conductor of the Philadelphia Youth Orchestra. In 2001, he was appointed President and CEO. Maestro Scaglione is Artistic Director, Choral Society of Montgomery County, and Past-Chairman, League of American Orchestras' Youth Orchestra Division Board.

### **Geoff McDonald, Director & Conductor, PYAO**

Mr. McDonald is the Music Director of the Columbia University Bach Society and an Assistant Conductor for the American Symphony Orchestra and Gotham Chamber Opera. He holds a Masters degree in Orchestral Conducting from Mannes and a B.A. from Princeton University.

### **Paul Bryan, Director & Conductor, Bravo Brass**

Mr. Bryan teaches on the faculties of the Curtis Institute of Music, Drexel University, and Temple University, and serves as Associate Dean of Academic Affairs at Curtis. He holds positions as Music Director of Symphony in C's Summer Symphony Camp and the Reading Summer Music Institute.

### **William dePasquale, Director & Conductor, PRYSM**

In 1963, Mr. dePasquale joined The Philadelphia Orchestra, where he recently retired as Co-Concertmaster. First violinist of The dePasquale String Quartet and violist of The dePasquale Trio, Mr. dePasquale is on the violin faculty at Temple University's Esther Boyer College of Music.

### **Gloria dePasquale, Director, PRYSM**

Mrs. dePasquale, a bachelor's and master's graduate of the New England Conservatory of Music, joined the cello section of The Philadelphia Orchestra in 1977.

### **Sarah Sutton, Associate Director, PRYSM Young Artists**

Ms. Sutton is a graduate of the Yehudi Menuhin School of Music. She has appeared as Principal Violist with the Camerata Lysy Gstaad, New World Symphony and Princeton Symphony Orchestra, and Guest Co-Principal with the Orchestra of the Royal Opera House, Covent Garden.

### **Daniela Pierson, Director & Conductor, MSO**

Ms. Pierson, violinist and violist, studied at the University of Pennsylvania and Mannes College of Music, and performs with Tempesta di Mare, the Philadelphia Bach Festival, the National Cathedral Baroque Orchestra, and other early music ensembles.

### **Delia Raab-Snyder, Director, Tune Up Philly**

Ms. Raab-Snyder, clarinetist, is a graduate of the Mannes College of Music and The University of Southern California. She has studied the Orff Method at Villanova University and has worked as a music educator in New York, Los Angeles, and Philadelphia.

**Philadelphia Youth Orchestra**

Louis Scaglione, Music Director & Conductor

**Philadelphia Young Artists Orchestra**

Geoff McDonald, Director & Conductor

**Bravo Brass**

Paul Bryan, Director & Conductor

**PRYSM (Philadelphia Region Youth String Music)**

William dePasquale, Director & Conductor

Gloria dePasquale, Director

**PRYSM Young Artists**

Sarah Sutton, Associate Director & Conductor

**Musicopia String Orchestra**

Daniela Pierson, Director & Conductor

**Tune Up Philly**

Delia Raab-Snyder, Director

**Sunday, November 6, 2011 – 3:00 p.m.**

Philadelphia Youth Orchestra & D.C. Youth Orchestra

Jesus Manuel Berard, *Conductor, DCYO*

- Wagner                      Prelude to *Die Meistersinger*
- Dvořák                        Symphony No. 9

The Temple Performing Arts Center, Philadelphia, Pa.

FREE admission – Information: 215.545.0502

**Saturday, December 3, 2011 – 2:00 p.m.**

Tune Up Philly

People for People Charter School, Philadelphia, Pa.

FREE admission – Information: 215.545.0502

**Sunday, December 4, 2011 – 7:30 p.m.**

Bravo Brass

*Viennese Brass*

- von Suppe                    Light Calvary Overture
- Bruckner                     Christus Factus est
- Strauss                        Radetzky March

Saint Mark's Church, Philadelphia, Pa.

Tickets: adults \$15, students/seniors \$10, children under 13 FREE

Information: 215.545.0502

**Saturday, December 10, 2011 – 7:30 p.m.**

Philadelphia Youth Orchestra

*Lively Arts Series at Montgomery County Community College*

Choral Society of Montgomery County

Jacqueline Dunleavy, *Soprano*

Sandra Carney, *Mezzo Soprano*

Steven Brennfleck, *Tenor*

Brian Ming Chu, *Bass*

- G.F. Handel                 *Messiah*

Science Center Theater, Blue Bell, Pa.

Tickets: adults \$15, students/seniors \$12, children \$5

Information: 215.641.6518

**Tuesday, December 20, 2011 – 8:00 p.m.**

Philadelphia Young Artists Orchestra

*Holiday Benefit Concert for St. James School*

Choral Society of Montgomery County

Upper Darby High School Encore Singers

- G.F. Handel                 *Messiah* (excerpts)
- Songs & Carols of the Season

Saint Mark's Church, Philadelphia, Pa.

Tickets: Goodwill offering – Information: 215.545.0502

**Saturday, January 28, 2012 – 2:00 p.m.**

PRYSM & PRYSM Young Artists

- Beethoven                    Quartet in F Major, Op. 18, No. 1
- Copland/Bulla                Hoe Down from *Rodeo*
- Mendelssohn                 Canzonetta, Op. 12

Centennial Hall – The Haverford School, Haverford, Pa.

Tickets: adults \$15, students/seniors \$10, children under 13 FREE

Information: 215.545.0502

**Saturday, January 28, 2012 – 5:00 p.m.**

Musicopia String Orchestra

- Barber/Hoffman             Adagio for Strings
- Newbold                      Blue Fire Fiddler
- Mozart/Brubaker            Symphony No. 25

Lutheran Church of the Holy Communion, Philadelphia, Pa.

FREE admission – Information: 215.829.9522 Ext. 16

**Sunday, February 19, 2012 – 7:30 p.m.**

Philadelphia Youth Orchestra

- Shostakovich                Symphony No. 1
- Tchaikovsky                 Symphony No. 6

Verizon Hall, The Kimmel Center for the Performing Arts

Tickets: \$20 - \$25 – Ticket Philadelphia: 215.893.1999

**Saturday, February 25, 2012 – 7:30 p.m.**

Bravo Brass

*Glory of Gabrieli*

- Gabrieli                        Sonata pian e' forte
- Gabrieli                        Canzon 28
- Gabrieli                        Jubilate Deo

Saint Mark's Church, Philadelphia, Pa.

Tickets: adults \$15, students/seniors \$10, children under 13 FREE

Information: 215.545.0502

---

**Sunday, March 4, 2012 – 2:00 p.m.**

Philadelphia Young Artists Orchestra

*Benefit Concert for Youth Work Foundation*

- Rossini Overture to *Il barbiere di Siviglia*
- Britten *Matinées Musicales*
- Beethoven Symphony No. 1

Lincoln Hall, The Union League of Philadelphia, Philadelphia, Pa.

Tickets: adults \$15, students/seniors \$10, children under 13 FREE

Information: 215.545.0502

---

**Friday, March 9, 2012 – 6:30 p.m.**

Philadelphia Youth Orchestra

*2012 PYO Gala Dinner and Concert*

- Wagner Prelude to *Die Meistersinger*
- Dvořák Symphony No. 9

The Union League of Philadelphia, Philadelphia, Pa.

Advanced reservations required

To request an invitation: 215.545.0502

---

**Sunday, April 15, 2012 – 7:30 p.m.**

Philadelphia Youth Orchestra

- Dvořák Symphony No. 9
- Gershwin *American in Paris*
- Bernstein Symphonic Dances from *West Side Story*
- E. Bernstein Overture to *Magnificent Seven*
- Copland Hoe Down from *Rodeo*

Verizon Hall, The Kimmel Center for the Performing Arts

Tickets: \$20 - \$25 – Ticket Philadelphia: 215.893.1999

---

**Saturday, May 5, 2012 – 7:30 P.M.**

Philadelphia Youth Orchestra

*Lively Arts Series at Montgomery County Community College*

**Choral Society of Montgomery County**

Jacqueline Dunleavy, *Soprano*

Sandra Carney, *Mezzo Soprano*

Steven Brennfleck, *Tenor*

Brian Ming Chu, *Bass*

- Haydn *The Seasons*

Science Center Theater, Blue Bell, Pa.

Tickets: adults \$15, students/seniors \$12, children \$5

Information: 215.641.6518

---

**Saturday, May 19, 2012 – 2:00 p.m.**

PRYSM & PRYSM Young Artists

*5th Annual Festival Concert*

- Brahms/McCashin Academic Festival Overture
- Haydn Quartet, No. 19
- Dvořák "American Quartet"

Centennial Hall – The Haverford School, Haverford, Pa.

Tickets: adults \$15, students/seniors \$10, children under 13 FREE

Information: 215.545.0502

---

---

**Sunday, May 20, 2012 – 7:30 p.m.**

Philadelphia Young Artists Orchestra

*17th Annual Festival Concert*

Elena Urioste, *Violin*

- Mozart Violin Concerto No. 5
- Schumann Symphony No. 2

Perelman Theater, The Kimmel Center for the Performing Arts

Tickets: \$15 - \$20 – Ticket Philadelphia: 215.893.1999

---

**Saturday, June 2, 2012 – 7:30 p.m.**

Bravo Brass

*9th Annual Festival Concert*

*Famous Brass*

- Fauré Pavane
- G.F. Handel Water Music
- Beethoven "Ode to Joy" from Symphony No. 9

Saint Mark's Church, Philadelphia, Pa.

Tickets: adults \$15, students/seniors \$10, children under 13 FREE

Information: 215.435.1698

---

**Saturday, June 9, 2012 – 2:00 p.m.**

Tune Up Philly

People for People Charter School, Philadelphia, Pa.

FREE admission – Information: 215.545.0502

---

**Saturday, June 9, 2012 – 4:00 p.m.**

Musicopia String Orchestra

- Corelli Concerto Grosso in B-flat
- Grieg/del Borgo Suite from *Peer Gynt*
- Stravinsky/Keiser Round Dance from *Firebird*

Independence Seaport Museum

FREE admission – Information: 215.829.9522 Ext. 16

---

**Sunday, June 10, 2012 – 7:30 p.m.**

Philadelphia Youth Orchestra

*72nd Annual Festival Concert*

- Ravel *Rapsodie Espagnole*
- Debussy *La Mer*
- Berlioz *Symphonie Fantastique*

Verizon Hall, The Kimmel Center for the Performing Arts

Tickets: \$20 - \$25 – Ticket Philadelphia: 215.893.1999

---

For complete schedule information and performance updates,  
please visit [www.pyos.org](http://www.pyos.org) or call 215.545.0502.

# Board of Trustees

Trude Haecker, MD

Chairman

Joseph F. DiMauro, VMD

First Vice Chair

Frank Giordano

Second Vice Chair

David R. McShane

Treasurer

MaryTeresa Soltis, Esq.

Secretary

Elie Antar

Kenneth Blank, Ph.D.

Lawrence J. Choi

Rebecca Clement, Esq.

Michael Devine

W. Matthew Skilton

Rick Touhill

www.paonedesign.com



## The Philadelphia Youth Orchestra

P.O. Box 41810

Philadelphia, Pennsylvania

19101-1810

215.545.0502

For more information on the Philadelphia Youth Orchestra program as well as performance schedule updates, please visit [www.pyos.org](http://www.pyos.org).



*The PYO program receives support from the Pennsylvania Council on the Arts, a commonwealth agency funded by the Commonwealth of Pennsylvania, the National Endowment for the Arts and the Philadelphia Cultural Fund.*